

## Compatibility Overview Demig IO Cards with DE-CP Controller Generation

Item no.	Type designation
810255	DE-CP320-01
810257	DE-CP322-01
810258	DE-CP340-01
810259	DE-CP342-01
810265	DE-CP344-01
810256	DE-CP520-01
810260	DE-CP522-01
810261	DE-CP540-01
810262	DE-CP542-01
602831	DE-CE ECB-01

**List of IO cards that can be used with the DE-CP controller generation.**

- 601608 IN24/OUT16: 24-fold IN/16-fold OUT Karte
- 601611 IN32: 32-fold digital input card
- 601612 IO32: 32-fold digital I/O card
- 601617 AD8: 8-fold analog input card
- 601618 AD4DA2: 4-fold Analog IN / 2-fold Analog OUT Karte
- 601615 DA8: 8-fold Analog OUT
- 601702 REL16: 16-fold digital output card

**Attention:** The named cards must not be operated in compatibility mode (IO32/OUT32 and DA8: configuration switch = 8).

---

**List of I/O cards that can be used with the DE-CP controller generation following a firmware update of the cards.**

- 601613 AD8: 8-fold analog input card
- 601614 AD4DA2: 4-fold Analog IN / 2-fold Analog OUT Karte
- 601616 AD4DA2 (SchAusg): 4-fold Analog IN / 2-fold Analog OUT Card (Switching Output)

**For the firmware update, the cards must be sent to Demig. Order number: 871619**

**List of IO cards that can no longer be used with the DE-CP controller generation.**

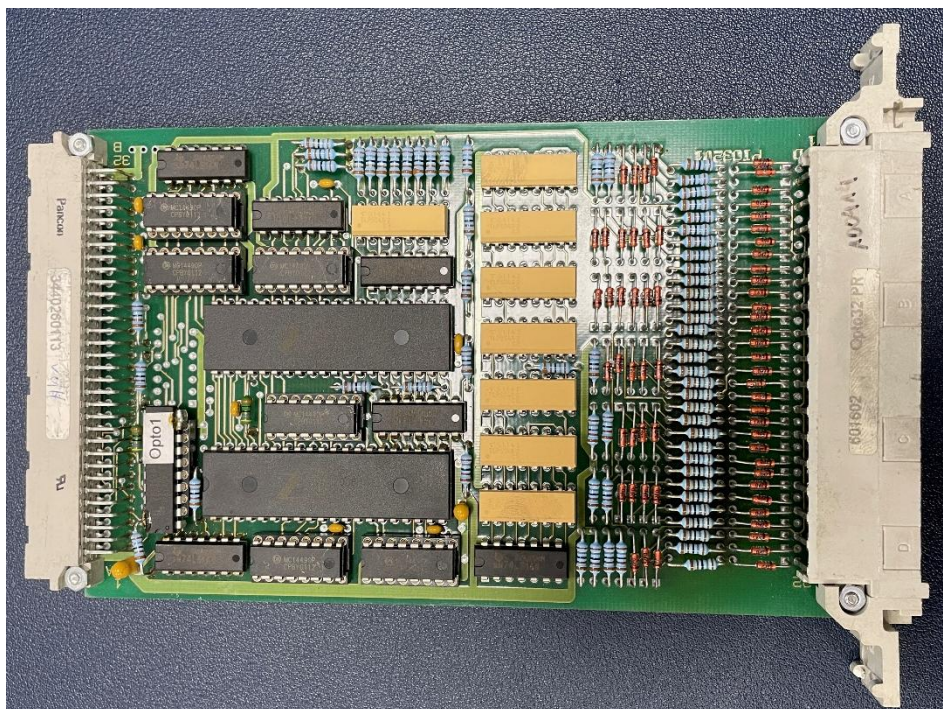
**SMD Cards**

- 601605 IN24/OUT16: 24-fold IN/16-fold OUT Karte
- 601609 IN32: 32-fold digital input card
- 601712 IO32: 32-fold digital I/O card
- 601419 AD8: 8-fold analog input card
- 601460 AD4DA2: 4-fold Analog IN / 2-fold Analog OUT Karte
- 601461 AD4DA2 (SchAusg): 4-fold Analog IN / 2-fold Analog OUT Card (Switching Output)
- 601509 DA8: 8-fold Analog OUT

**Leaded Cards**

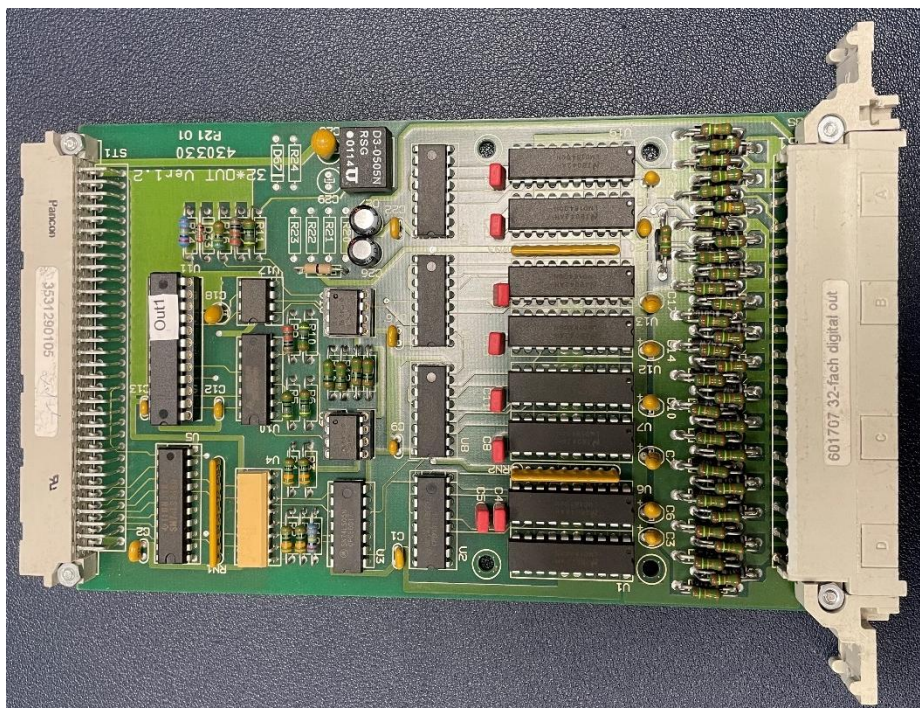
- 601602 IN32: 32-fold digital input card
- 601707 IO32: 32-fold digital I/O card
- 601416 & 601417 AD8: 8-fold analog input card
- 601409 AD4DA2: 4-fold Analog IN / 2-fold Analog OUT Karte
- 601413 AD4DA2 (SchAusg): 4-fold Analog IN / 2-fold Analog OUT Card (Switching Output)
- 601502 & 601508 DA8: 8-fold Analog OUT
- 601823 & 601837 Profibus Master
- 601821 Profibus Slave

**32-fold input card (optocoupler card) Art.Nr. 601602**



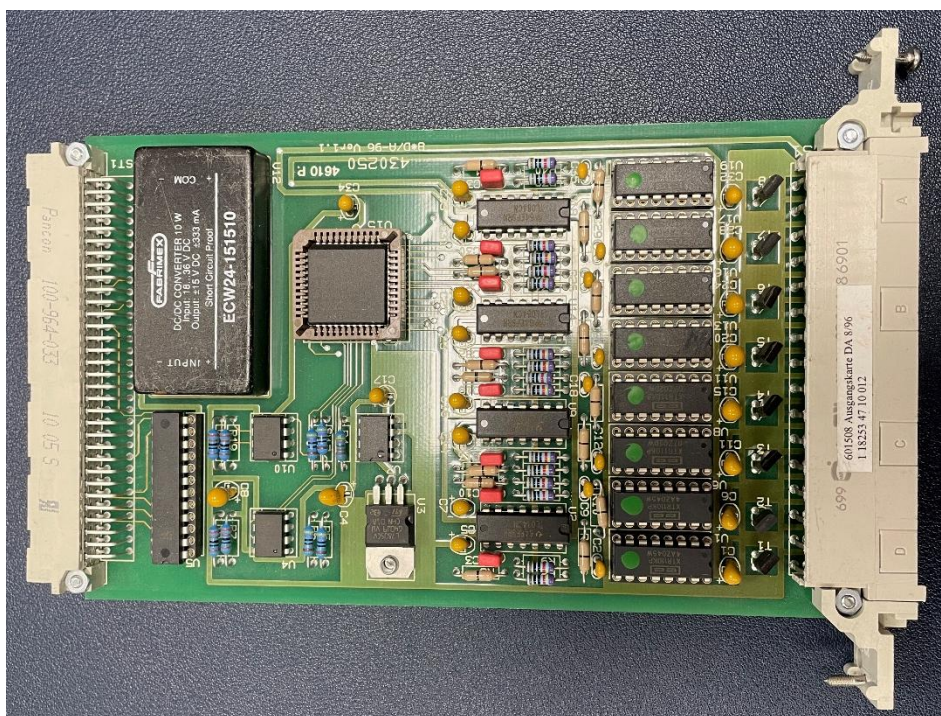
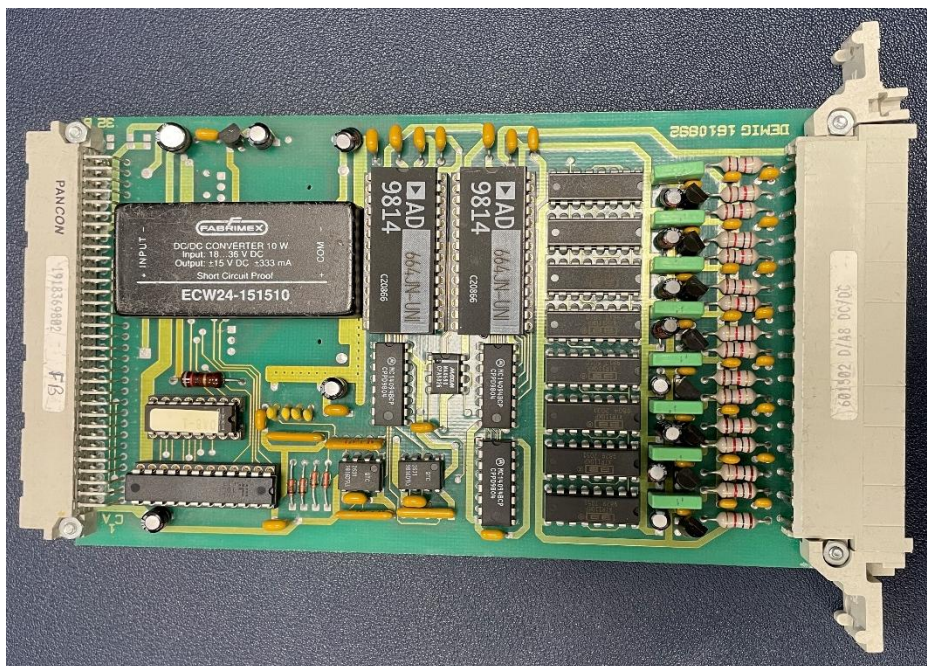
Example (no longer usable)

**32-fold outcard Art.Nr. 601707**



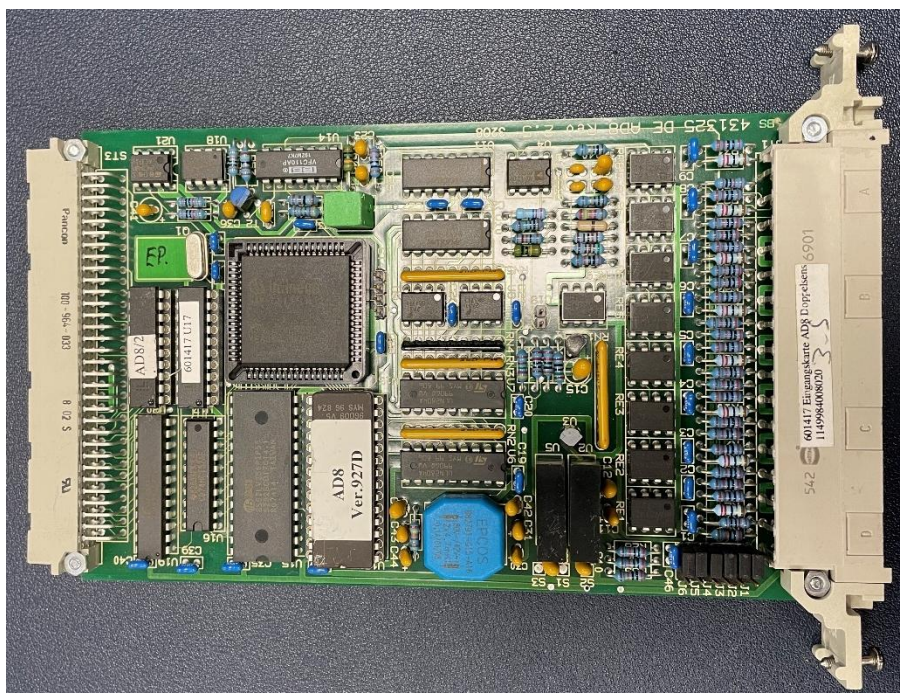
Example (no longer usable)

8-fold analog output cards (DA8 card) Art.Nr. 601502 & 601508



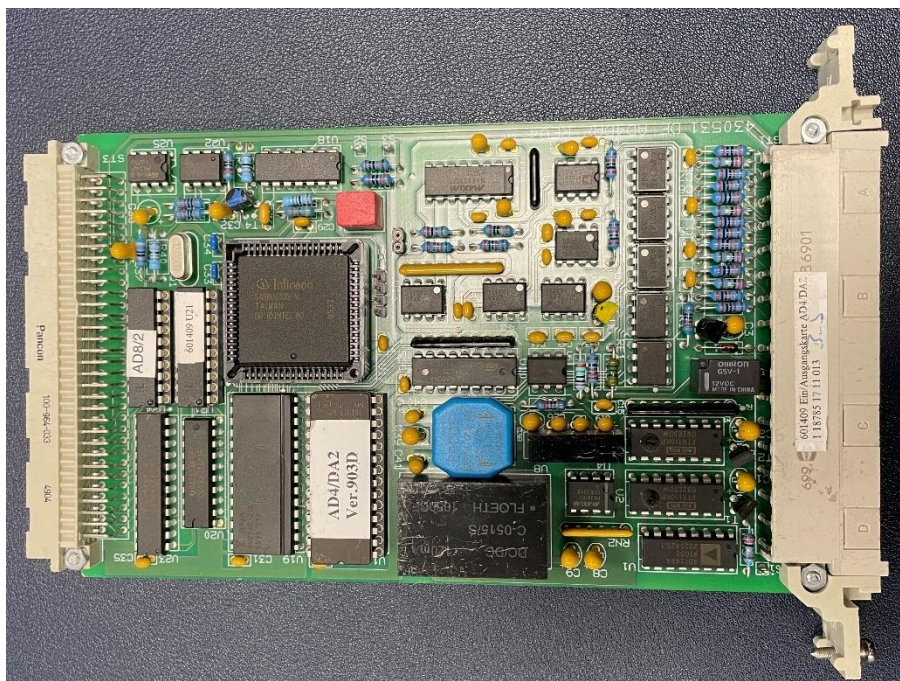
Example (no longer usable)

**8-fold analog input cards (AD8 card) Art.Nr. 601416 & 601417**



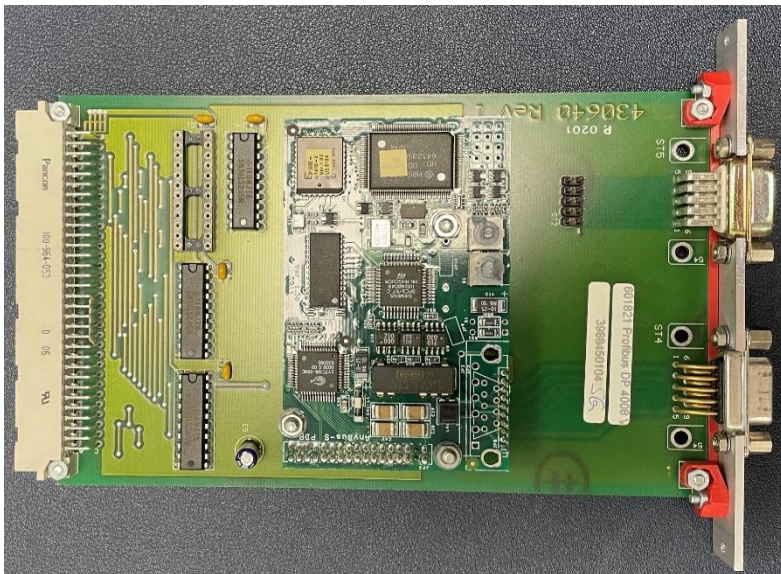
Example (no longer usable)

**4-fold analog input/2-way analog output card Art.Nr. 601409**



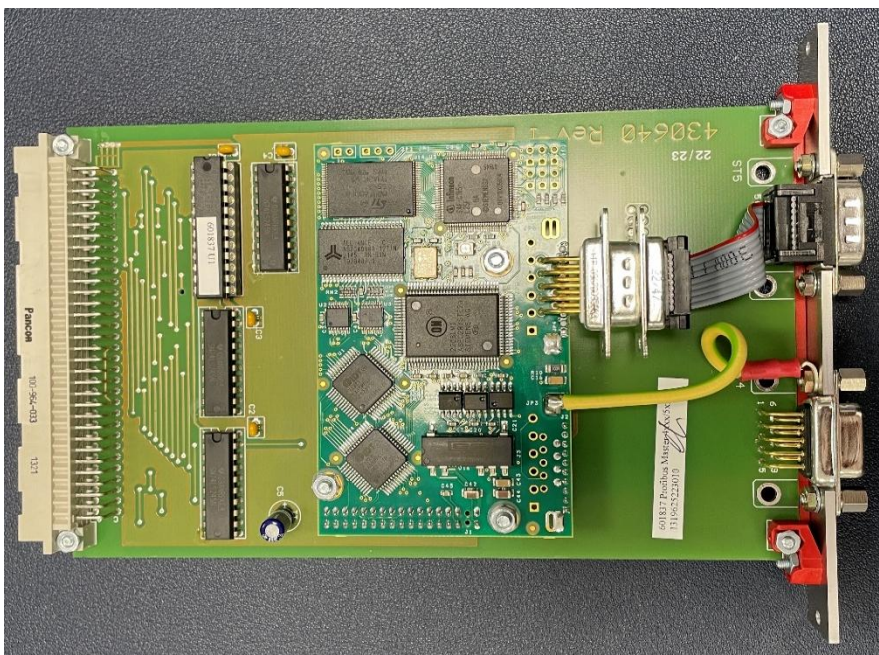
Example (no longer usable)

**Profibus Master Art.Nr. 601823 &601837**



Example (no longer usable)

**Profibus Slave Art.Nr. 601821**



Example (no longer usable)

**Tobias Klaus**

Leiter Support | Head of Support

Support-Hotline: +49 271 77202 25  
[support@demig.de](mailto:support@demig.de)